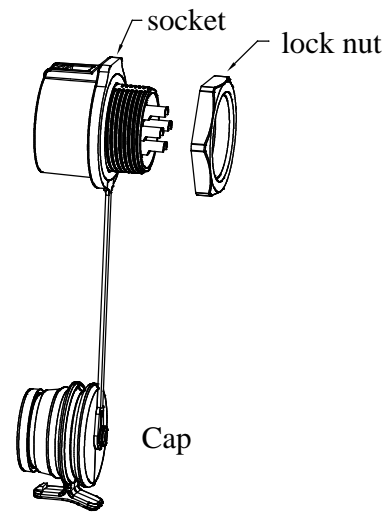
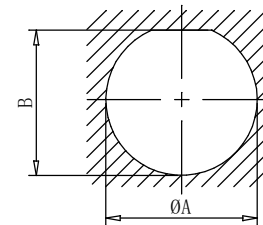


WK20-ZM rear nut mount socket assembling instructio-Solder



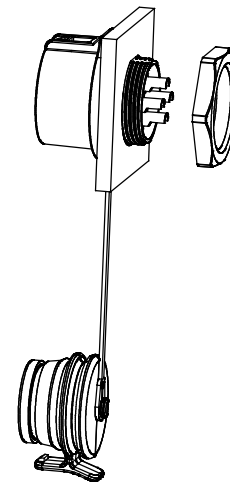
panel cutout(mm)



Series	A	B
WK20	20.2	19.3

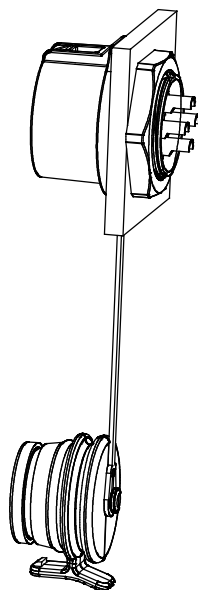
1、 Disassemble the lock nut.

2、 Drill hole on the panel according to the cutout size in the table.



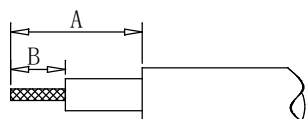
3、 Install the socket into the panel .

WK20-ZM rear nut mount socket assembling instructio-Solder

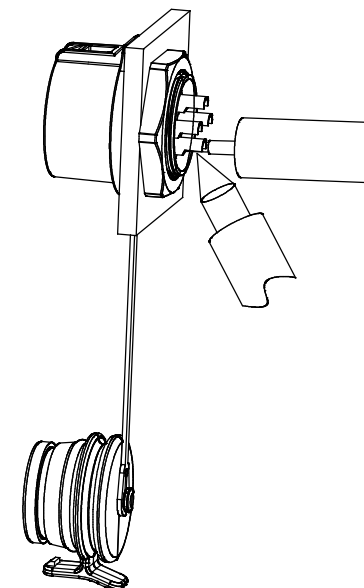


4、Tighten the lock nut by torque of 0.6-1N.m.

· Strip length



Series	A (mm)	B (mm)
WK20	25	8



5、Strip the cable to the length shown in the table below, and solder the wire to the pin .

Note that the soldering iron should not burn the pin during the process. After soldering, put a heat shrink tube on the solder pin and wrap the heat shrink tube.